

Product range

Quick-Lock STANDARD for non-man entry pipes

| Diameter | Length | Installation packer |
|---------------------|--------|---|
| DN 3.9", 4.9", 5.9" | 3.74" | VP 3.9" bends, VP 4.9" bends, VP 5.9" bends |
| DN 3.9", 4.9", 5.9" | 5.83" | VP/VP-L 3.9", VFW 4.9"-5.9" |
| DN 6" to 16" | 15.75" | VFWL 6"- 8", VFWL 8"- 12", VFWL 14"- 20" |
| DN 18" to 32" | 19.69" | VFWL 14"- 20", VFWL 20"- 24", VFWL 24"- 32" |

Quick-Lock LinerEnd for Liner connection

| Diameter | Length | Installation balloons and assembly tools |
|---------------------|--------|--|
| DN 3.9", 4.9", 5.9" | 5.87" | VP/VP-L 3.9", VP-L 4.9", VP-L 5.9" |
| DN 6" to 16" | 9.84" | VP-L 6" - 10", VP-L 10.8" - 16" |
| DN 18" to 28" | 11.81" | VP-L 18"- 24", VP-L 28"- 32" |
| DN 32" | 15.75" | VP-L 28" - 32" |

The Liner Cutter is mandatory for all diameters!

Quick-Lock FLEX for offsets / positional deviations up to 0.98" and 10° angle

| Diameter | Length | Installation packers |
|---------------|--------|---|
| DN 8" to 18" | 14.17" | VFWL 3.9" - 5.9", VFWL 8" - 12", VFWL 14" - 20" |
| DN 20" to 32" | 18.11" | VFWL 14" - 20", VFWL 20" - 24", VFWL 24" - 32" |

Quick-Lock BIG for man entry pipes , **2-part, ***3-part, ****4-part

| Diameter | Length | Assembly tools |
|---------------------|--------|--|
| DN 32"to 51" ** | 9.02" | BIG-WE Assembly tools, 4-part |
| DN 55" to 83" *** | 9.02" | BIG-WE Assembly tools, 4-part + additional set 1 for QL BIG |
| DN 87" to 118" **** | 9.02" | BIG-WE Assembly tools, 4-part, + 2x2-part additional sets 1 for QL BIG |

Quick-Lock BIG LinerEnd for man entry pipes, **2-part, ***3-part, ****4-part

| Diameter | Length | Assembly tools |
|-------------------|--------|--|
| DN 28" to 51" ** | 13.15" | BIG-WE Assembly tools, 4-part |
| DN 55" to 83"*** | 13.15" | BIG-WE Assembly tools, 4-part + additional set 2 for QL BIG LEM |
| DN 87" to 94"**** | 13.15" | BIG-WE Assembly tools, 4-part, + 2x2-part additional sets 2 for QL BIG LEM |

The Liner Cutter is mandatory for all diameters!

Quick-Lock BRUNNEN for wells and supply lines

| Diameter | Length | Installation packers |
|---------------|--------|--|
| DN 6" to 16" | 15.75" | VP-BR 6" - 8", VP-BR 10" - 12", VP-BR 14"- 16" |
| DN 18" to 32" | 19.69" | VP-BR 20"- 24", VP-BR 28" - 32" |

Quick-Lock PRESSURE PIPE (LD+HD) for rehabilitation in pressurized pipelines

| Diameter | Length | Installation packers |
|---------------|--------|---|
| DN 6" to 16" | 15.75" | VFWL 6"- 8", VFWL 8"- 12", VFWL 14"- 20" |
| DN 18" to 32" | 19.69" | VFWL 14"- 20", VFWL 20"- 24", VFWL 24"- 800 |

Quick-Lock PRESSURE PIPE LinerEnd (LD+HD) for liner connection in pressurized pipelines

| Diameter | Length | Installation packers |
|---------------|--------|-------------------------------|
| DN 6" to 16" | 9.84" | VP-L 6"- 10", VP-L 10.8"- 16" |
| DN 18" to 24" | 11.81" | VP-L 18"- 24" |

The Quick-Lock systems are suitable for rehabilitation in wastewater and industrial sectors, in potable water areas / well rehabilitation, in seawater areas and in pressure pipelines. Customised products available on request. A pressure test in accordance with DIN EN 1610 can be carried out on the entire product range.



Version 2025_11 Illustrations are similar, subject to errors and technical changes.

#Since1993

#TheOriginal

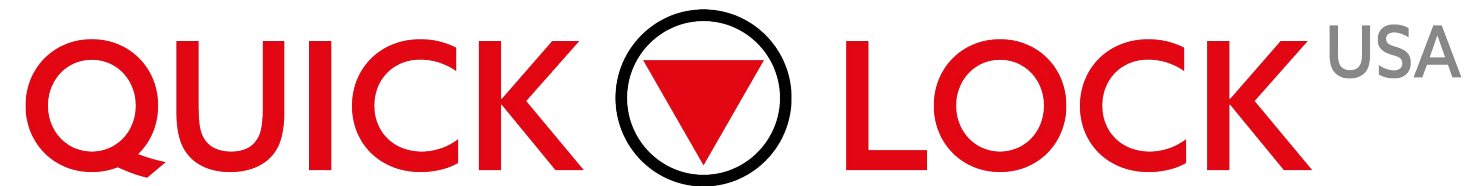
#QUICKLOCKFAMILY

PRODUCT OVERVIEW

Expertise in trenchless rehabilitation

Internal sleeves for pipe repair and liner connections based on compression

with DIBt approval no. Z-42.3-374



How it works

The Quick-Lock system seals and stabilises any damaged areas by purely mechanical means, without the need for chemicals. It can be used on pipes made of all types of materials. The locking system ensures that the sleeve remains securely in place. The sleeve support remains elastic after the rehabilitation and absorbs the natural movements of the pipes. In the case of damage along an extended section of a pipeline, the Quick-Lock sleeves can be installed in series.

Advantages of the system

- simple installation process, saves time and costs
- durable materials 316L or 904L stainless steel and EPDM, NBR or Silicone seals
- no construction chemicals like glue or resin
- a special developed locking mechanism for the highest demands, even in high-pressure areas
- permanent availability of all sizes for rehabilitation in wastewater- and industrial sectors, in potable water areas and in seawater areas
- proven lifespan of more than 30 years
- design Lifetime 100+ years



#TheOriginal



* only approved in connection with silicon seal



Quick-Lock STANDARD
for non-man entry pipes
DN 3.9" - DN 32" (1-part)



Quick-Lock LinerEnd
for attaching hose liners to
pipes and structures
DN 3.9" - DN 32" (1-part)



Quick-Lock FLEX
for offsets
of up to 0.98 inch
DN 8" - DN 32"

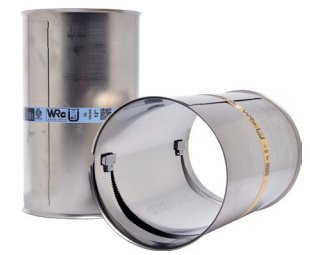


Quick-Lock BIG
separable sleeve for
rehabilitating accessible
pipework systems (multi-part)
DN 32" - DN 118"

Quick-Lock BIG LinerEnd
DN 28" - DN 94" (multi-part)



Quick-Lock BRUNNEN
for wells and
supply lines
DN 6" - DN 32"



Quick-Lock PRESSURE PIPE (LD+HD)
for rehabilitation in
pressurized pipelines
DN 6" - DN 32"

Quick-Lock PRESSURE PIPE LinerEnd (LD+HD)
for liner connection in
pressurized pipelines
DN 6" - DN 24"

Common QUICK LOCK applications

